

# UPDATED COVID-19 PROTOCOLS FOR THE 2021-22 SCHOOL YEAR



# COVID-19 GUIDANCE FOR THE 2021-22 SCHOOL YEAR

SCS will continue to monitor the CDC and Shelby County Health Department guidance for updates and recommendations. The District is committed to keeping all employees, students, and constituents safe.



# SAFETY MEASURES: MASKS (Until Further Notice)

## SCHOOL-BASED

- Students and school-based staff are required to wear masks indoors (in schools and wherever children are present), regardless of vaccination status.
- Mask-wearing is mandatory on buses.

## CENTRAL OFFICE/OTHER NON-SCHOOL-BASED STAFF

- Employees are strongly encouraged to wear masks in administrative offices and required to wear masks in schools and wherever children are present.



Health & safety is our top priority.  
Thank you for protecting yourself and others.

## STAY HOME WHEN SICK



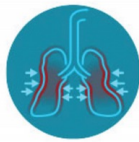
If you feel unwell or have any of the following symptoms, please stay home.



FEVER



COUGH



SHORTNESS OF  
BREATH

Remember to contact your supervisor  
if you are staying home due to illness.

[scsk12.org/coronavirusfacts](https://scsk12.org/coronavirusfacts)



# CONTINUED SAFETY MEASURES

- Students and staff should stay home if not feeling well.

### **UPDATE (As of July 28, 2021)**

- Temperature checks are required for all visitors, including parents and vendors.
- Daily temperature checks are no longer required for employees and students.



**Return STRONGER**

# CONTINUED SAFETY MEASURES

## SOCIAL DISTANCING

- Students will socially distance to the extent possible in classrooms, hallways, common spaces, when moving through the food service line, and while eating.
- Sharing of school supplies and other materials will be discouraged.
- Schools will use a safe room for those exhibiting symptoms of illness.

## WATER

- Bottled water will be provided, and students are strongly encouraged to bring water containers.



# CONTINUED SAFETY MEASURES

## CLEANING PROTOCOLS

- Staff and students are encouraged to wash hands for 20 seconds minimum and use hand sanitizer.
- All schools will be provided PPE, as needed.
- All areas will be cleaned and disinfected daily.
- The District will use sneeze guards and barriers.



# UPDATED PROTOCOLS: PARENT MEETINGS



- Regular parent in-person meetings will resume, and participants will follow District COVID-19 guidance.
- Appointments are recommended.



**Return** ***STRONGER***

# UPDATED PROTOCOLS: PLAYGROUNDS

- Playgrounds will reopen for students with social distancing to the extent possible.
- Outdoor recess and playground equipment will be cleaned and disinfected daily.
- Students will be encouraged to wash or sanitize their hands before and after using playground equipment.





# NEW PROTOCOLS: FIELD TRIPS & ATHLETICS

- Resume normal District-approved practices and processes relating to field trips following District COVID-19 guidance.
- School activities for employees and students including athletics (*before, during, and after school*) will resume and participants will follow District COVID-19 guidance.



# ADDITIONAL UPDATES & REMINDERS

## DEVICES

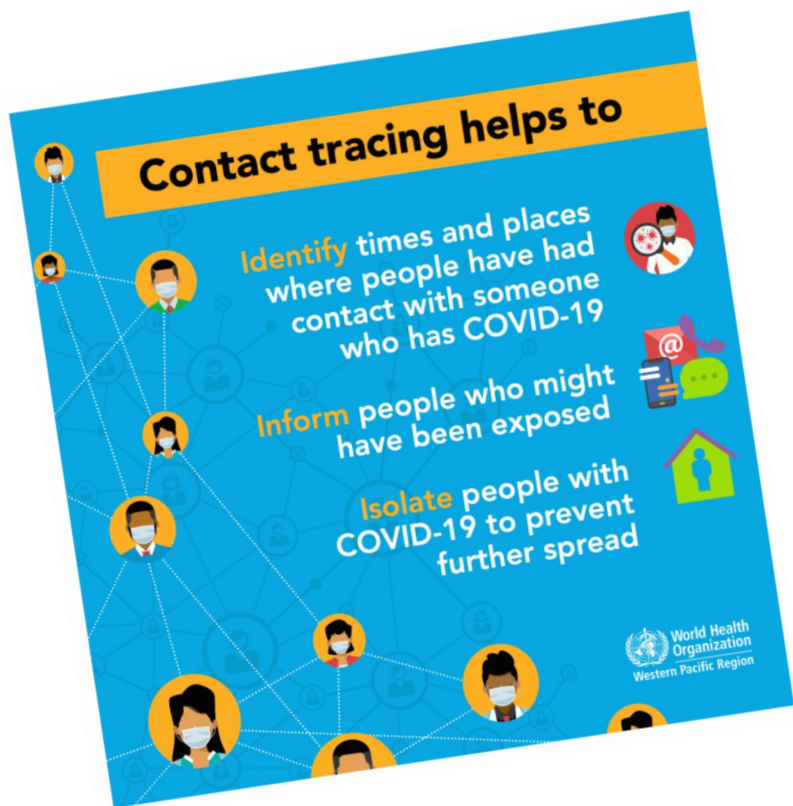
- Like textbooks and supplies, devices should be charged and brought to school daily.

## UNIFORMS

- Students are required to follow the SCS Board Policy on uniforms. Families should contact their child's school for questions about the required dress code.



# CONTACT TRACING



All contact tracing protocols will remain the same, and the District will continue to partner with the Shelby County Health Department.



**Return STRONGER**

# THANK YOU



**D**Return **STRONGER**